



Dual Credit and Running Start Programs

**Glacier Peak High
School**

February 16, 2022

Running Start & Dual Credit Programs

*Kari Winckler,
GP College and Career Specialist*

*Danielle McHugh,
GP Counselor S-Z*

Kari Winckler, *GP College and Career Specialist*

Danielle McHugh, *GP Counselor S-Z*

Agenda:

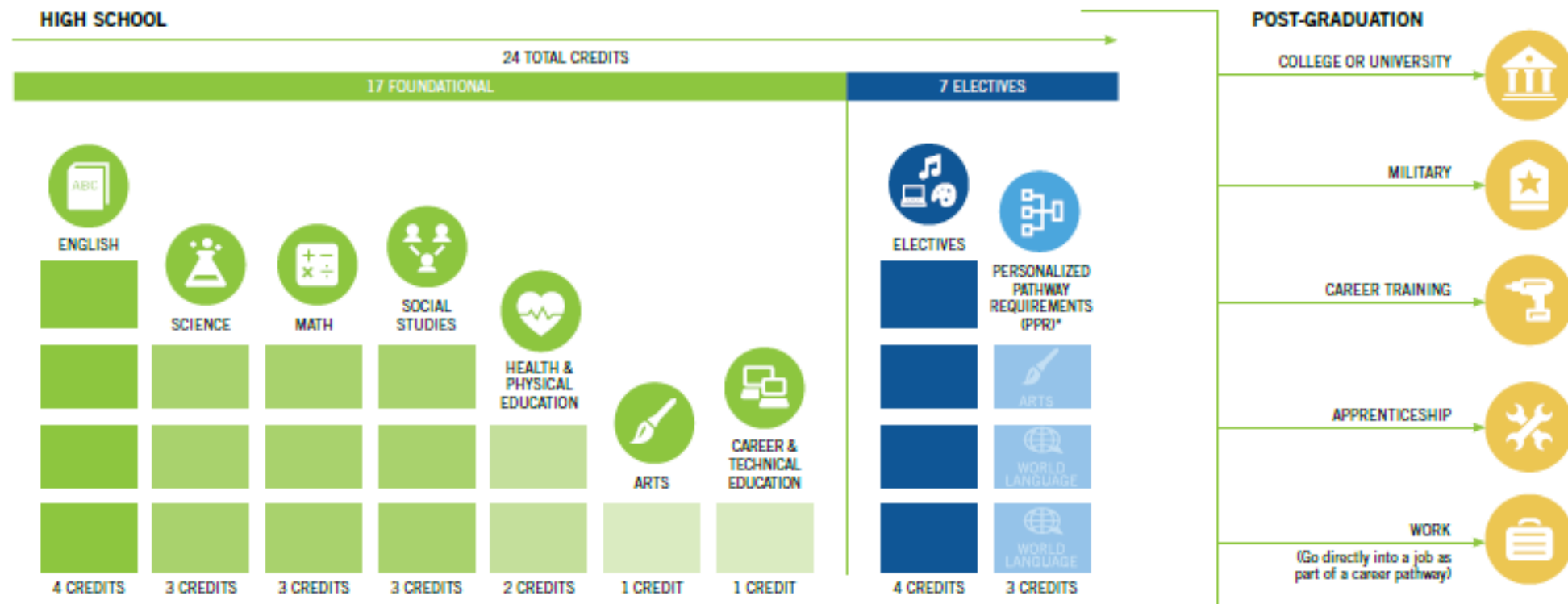
An overview of Dual Credit Programs

Graduation Requirements

- What is Dual Credit?
- Ways to Earn Dual Credit
- Advanced Placement Exam Dual Credit
- College in the High School Dual Credit
- Career and Technical Education (CTE) Dual Credit
- Running Start Basics

Career and College Ready GRADUATION REQUIREMENTS

How many credits must a student earn to graduate in the Snohomish School District?



**PPR = Personalized Pathway Requirements*

The PPR are three credits chosen by the student based on his or her interest and High School & Beyond Plan that lead to a specific post high school career outcome. While the State Board of Education recommends these credits include two years of a world language and a second arts credit, these courses are not required and may be substituted with three courses that more closely relate to the student's post-high school goal.

What is Dual Credit?

The ability to earn both high school and college credit at the same time.



Why Dual Credit?

- ❖ Increased graduation rates and college enrollment
- ❖ College credit earned in high school
- ❖ Workforce training
- ❖ Tuition and training savings

DUAL CREDIT OPTIONS THROUGH GLACIER PEAK HIGH SCHOOL



Advanced
Placement

Credit by Exam



College in
the High
School

Credit by Course



Running
Start

Credit by Course

CTE Dual
Credit

Credit by Course

Dual Credit Options by Class Standing

Freshman

Sophomore

Junior

Senior

CTE Dual Credit (formerly Tech Prep)

AP

College in the High School

Running Start

The AP logo consists of a dark blue circle with the letters 'A.P.' in a serif font inside it.

Advanced Placement

College-level

GP teachers at GP

AP exam for credit

AP exam test fee



Exam Score Equivalency

Chemistry

Name	Min AP Score for Credit	UW Course	Credit Award	Mee Requ
Chemistry	5	CHEM 142, 152, 162	5,5,5	NW,
Chemistry	4	CHEM 142, 152	5,5	NW,
Chemistry	3	CHEM 142	5	NW,

AP scores 3-5 also count as placement test for Honors CHEM 145.

Equivalency Guide

*Check with the university you or your student plan to attend for their credit awarding and equivalencies. Each university has this information on their website.

College In The High School (CHS)

- College in the High School (CHS) programs offer college-level academic courses
- Taught at the GP campus by GP teachers
- Earn high school and college credit
- Reduced tuition
- Starts a college transcript and GPA.
- CHS courses are accepted by public universities and community & technical colleges in the state of Washington
- Transferability varies by university - check with an admissions representative



CHS Registration

- Registration for CHS Credit on the College Website
- CHS Teachers give students a registration code
- THIS YEAR ONLY: Students will register for CHS classes starting March 1, both semesters at one time. Registration ends March 30, 2022.
- \$220 for every 5 college credits. Waivers and payment plans available for those who qualify.
- Retroactive registration is not permitted for CHS!
- FUTURE ACADEMIC YEARS: Two registration periods
 - First semester and year-long courses
 - Second semester courses
- New Registration System Open Now! [CTC Link](#)

The logo for "College in the H.S." features the text "COLLEGE IN THE H.S." in a bold, dark blue, sans-serif font. The text is arranged in three lines: "COLLEGE" on the top line, "IN THE" on the middle line, and "H.S." on the bottom line. The text is centered within a large, dark blue circular arc that frames the top and bottom of the text.

COLLEGE
IN THE
H.S.

CTE Dual Credit

CTE Dual Credit connects to educational pathways and career opportunities

High school and college credit

College enrollment information will be given by GP CTE Dual Credit teacher.

CTE Dual Credit Earned through Pacific NW College Credit program with a B or better or Everett Community College with a C or better.

Courses are taught at GPHS and Sno-Isle Tech. Review the CTE Courses Available in the GP Course Catalog.

Preview the Peak

LEARN MORE!

Visit Preview the Peak to learn more about
the Dual Credit classes offered at GP.

February 24

6:00PM to 8:00PM

A.P.

**COLLEGE
IN THE
H.S.**

What is Running Start?

Running Start is a program that allows 11th and 12th grade students to take college courses at a community or technical college.

- Open to juniors and seniors
- High school and college credits
- Classes are at the college
- Taught by college instructors
- Full-time or part-time
- College level placement required for tuition free enrollment



What is Running Start?

- ❖ Tuition free
- ❖ Up to 15 credits
- ❖ Families incur some costs:
textbooks, class fees, parking,
under 100 level courses
- ❖ Summer classes are not tuition
free
- ❖ Transportation is not provided to
the college.
- ❖ Students must maintain good
standing in GPA.



Running Start:

What classes do students take?

- ❖ High school counselors
- ❖ High school graduation requirements
- ❖ Course equivalencies :
- ❖ Civics at GP = Political Science 202 at EvCC
- ❖ College advisor
- ❖ College goals



ORCA - Ocean Research College Academy @EvCC



ORCA is an early college academy for high school students, who can earn up to two years of college credit while completing their high school education. Most students graduate with an associate degree in addition to a high school diploma.

Running Start Application Process



Choose a college



Visit their Running Start website



Complete math/English placement



Apply online.



Wait for the acceptance email

Running Start

Is Running Start right for you?



Are you excited about academic challenges?



Have you done well in previous academic work?



Can you be assertive and ask for help?



Are you comfortable with diverse situations?



Are you an independent learner?

- Social life-Will you miss your high school relationships?
- Academic Rigor-are you ready?
- Maturity and Independence
- Cost of books, fees, parking, transportation
- Conflict with high school schedules and holiday breaks
- Quarters vs. Semesters
- Availability of required courses
- Financial Aid Impact-Dual credits and completion rate will impact financial aid eligibility; please contact financial aid advisors for more information
- FERPA: Limited Parent Accessibility
- Stay connected to GP through the GP Daily Bulletin, and GP Website

Final Thoughts to Consider

Resources

Glacier Peak Counseling Webpage: <https://www.sno.wednet.edu/Page/4456>

Glacier Peak Course Catalog: <https://www.sno.wednet.edu/Page/2160>

CollegeBoard: <https://apstudents.collegeboard.org/>

College in the High School: <https://www.everettcc.edu/ccec/college-in-high-school>

CTE Dual Credit (formerly Tech Prep) <https://www.sbctc.edu/colleges-staff/programs-services/cte-dual-credit/>

EVCC: <https://www.everettcc.edu/programs/bat/cte-dual-credit>

Pacific NW College Credit: <https://www.pnwcollegecredit.org/>

Compare Dual Credit Programs: <https://www.sbctc.edu/default.aspx>

RUNNING START

- EVCC: <http://www.everettcc.edu/enrollment/hs-programs/running-startt>
- Cascadia College: http://www.cascadia.edu/advising/running_start.aspxx
- Lake Washington Tech: <https://www.lwtech.edu/academics/high-school/running-start/>
- Bellevue College: <https://www.bellevuecollege.edu/runningstart/>
- Edmonds CC: <https://www.edcc.edu/highschool/runningstart/default.html>

ACCUPLACER TEST PREP: <https://accuplacer.collegeboard.org/students/prepare-for-accuplacer/practice>

Questions?

